

GETTING STARTED

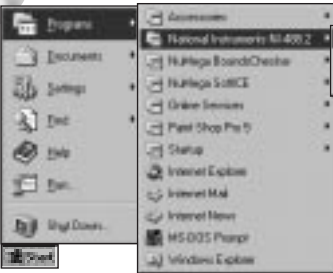
1

Insert CD, then choose Install NI-488.2 Software for Windows.



2

Run Add GPIB Hardware.



3

Shut down, then power off computer.

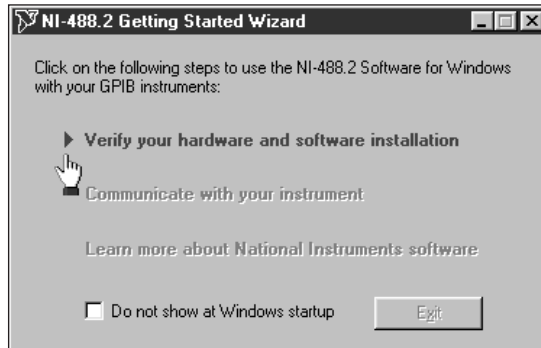


Power Off
Computer

(Continued)

5

Power on computer, then run NI-488.2 Getting Started Wizard.





www.natinst.com/support/
support@natinst.com

Tel: (512) 795-8248 • Fax: (512) 683-5678
Fax-on demand: (512) 418-1111 • [ftp.natinst.com](ftp://ftp.natinst.com)



322269A-01 020899